

Conference

EVENTS & INCENTIVES

**SCENIC
HOTEL
GROUP**

NEW ZEALAND
OWNED &
OPERATED



CONVENIENCE, LOCATION AND PERSONAL SERVICE

Perfectly positioned in the heart of Hamilton, the Heartland Ambassador Hotel Hamilton is the ideal venue for small conferences and business functions. We can provide you with accommodation, conference facilities, onsite parking, and assistance with booking all your leisure activities.

Whether it be an intimate small business meeting or conference for up to 50 people theatre style, we can tailor make your event with professionalism and flair. Our facilities are ideal for a variety of functions and events, plus with our onsite food and beverage team, and experienced staff, we can ensure a successful function every time.

CONTACT US

Heartland Ambassador Hotel Hamilton

86 Ulster Street, Whitiara,
Hamilton 3200

E: conference.hamilton@heartlandhotels.co.nz
0800 NZ OWNED (69 69 63)

www.scenichotelgroup.co.nz



For more information and to book, visit
scenichotelgroup.co.nz/HAM-functions

WAIKATO, HAMILTON

In the heart of the mighty Waikato, Hamilton is a cultural hub for the rich agricultural and pastoral surrounds, as well as many kiwi tourist attractions nearby. With the Waikato River running through the heart of this thriving city, there is plenty to see, do, and experience.

World class event and sporting facilities, magnificent parks and gardens, and a range of lifestyle activities at your doorstep, Hamilton is the perfect destination for your next meeting or event.

KEY LOCATIONS CLOSE TO OUR HOTEL

- FMG Stadium 850m
- City Centre 1.5km
- Claudelands Event Centre 1.5km
- Hamilton Gardens 6km
- Airport 17km



HEARTLAND AMBASSADOR HOTEL HAMILTON

The Heartland Ambassador Hotel Hamilton is located just minutes away from some of Hamilton's major sporting and entertainment venues, as well as the central business area. With accommodation options to suit business travellers through to families and groups, we can cater for most needs with our light, spacious rooms.

Special accommodation rates apply to our conference clientele and we will be delighted to include these great rates in your conference quotation.

- Check in 2pm
- Check out 10am
- Restaurant open daily for breakfast from 7am to 10am
- Free WiFi throughout the hotel
- Complimentary guest parking
- Reception available 24 hours
- Visitor information and booking service
- Room service available for breakfast
- Swimming pool and hot tub
- Guest laundry and valet dry cleaning service

Special accommodation rates apply to our conference clientele and we will be delighted to include these great rates in your conference quotation.



ACCOMMODATION OPTIONS

Heartland Ambassador Hotel Hamilton offers visitors to the region genuine kiwi hospitality and generosity that extends to the room sizes. Heartland Ambassador Hotel Hamilton rooms all include a TV with 50 SKY TV channels, mini fridge, balcony or patio, tea and coffee making facilities, and free WiFi. The en-suite bathroom comes with a hairdryer and toiletries. The Family Motel Rooms feature a kitchenette area with microwave, toaster, crockery, cutlery and a dining area.

STANDARD ROOM



SUPERIOR ROOM



FAMILY MOTEL ROOM





CONFERENCE CAPACITY CHART

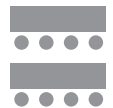
Room Layout

Boardroom



Theatre

50



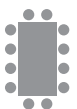
Classroom

24



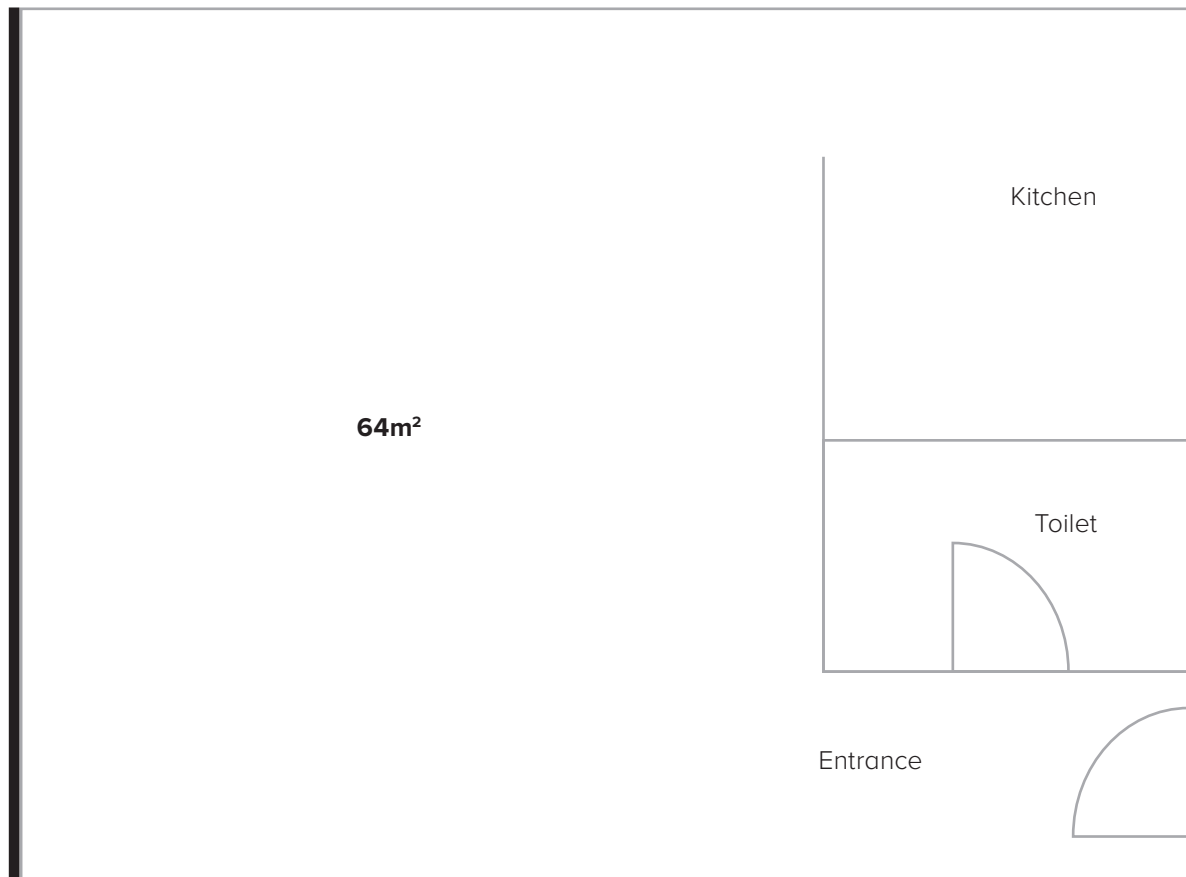
U Shape

20



Board Room

22



VENUE DETAILS

ROOM HIRE

- Half day (up to 4 hours) \$180
- Full day (8am - 5pm) \$250

DAY DELEGATE PACKAGES

- Full day: \$75pp
- Minimum 15 or more delegates

Includes room hire and set up with pads, pens, tap water, projector, whiteboard, flip chart.

All day tea and coffee, 1 selection for morning and afternoon tea, choice of lunch.

EVENT DETAILS

EQUIPMENT HIRE & SERVICES

All conference rooms include the following set up: tables with table cloths, 42 inch TV, mints, pads and pens, tap water

Unlimited WiFi	Complimentary
Car parking	Complimentary
Whiteboard and markers	\$10
Flipchart with easel	\$30
Data projector	\$100
Audio system - small portable speakers	\$20

Additional equipment is available on request. An additional charge may apply, please enquire.

Please talk to us about your individual requirements ahead of time so we can ensure the room is set up to best suit your needs.

All prices are inclusive of GST.

Prices subject to change without notice.



CONFERENCE MENU

Choose 1 from each selection

\$25 pp

SALAD

- Seasonal roast vegetable salad
- Mixed grain salad

Both salads are dressed with an olive oil citrus dressing

MEAT

- Seasoned chicken kebabs
- Meatballs
- Lamb kofta (extra \$3 per person)

VEGETARIAN

- Falafel
- Tumeric roasted cauliflower
- Fried marinated tofu

DIPPING SAUCE

- Satay
- Tzatziki
- Chipotle aioli

INCLUDES

- Selection of condiments
- Dinner rolls
- Fresh fruit platter
- Brownie

EVENT CATERING OPTIONS

All day tea and coffee	\$10 per day
Half day tea and coffee	\$5 per day
1L Voyage Still or Sparkling Water	\$10 each
500ml Voyage Still or Sparkling Water	\$5 each
Jug of juice: orange or apple	\$12 each

SWEET SELECTIONS

\$5 pp, per selection

- Fresh fruit platter
- Fresh baked biscuits
- Lemon yoghurt muffins *GF*

SAVOURY SELECTIONS

\$5 pp, per selection

- Kumara rosti with fresh salsa
- Mini bacon and egg quiches
- Vegetable fritters with dipping sauce

PLEASE NOTE:

We do not permit external catering.

***Dietary Information:** All meals are prepared in a facility using products containing allergens. Please advise the restaurant team of allergies or intolerances. Our chefs pride themselves on sourcing the freshest seasonal food and beverage, so menus are subject to change.*



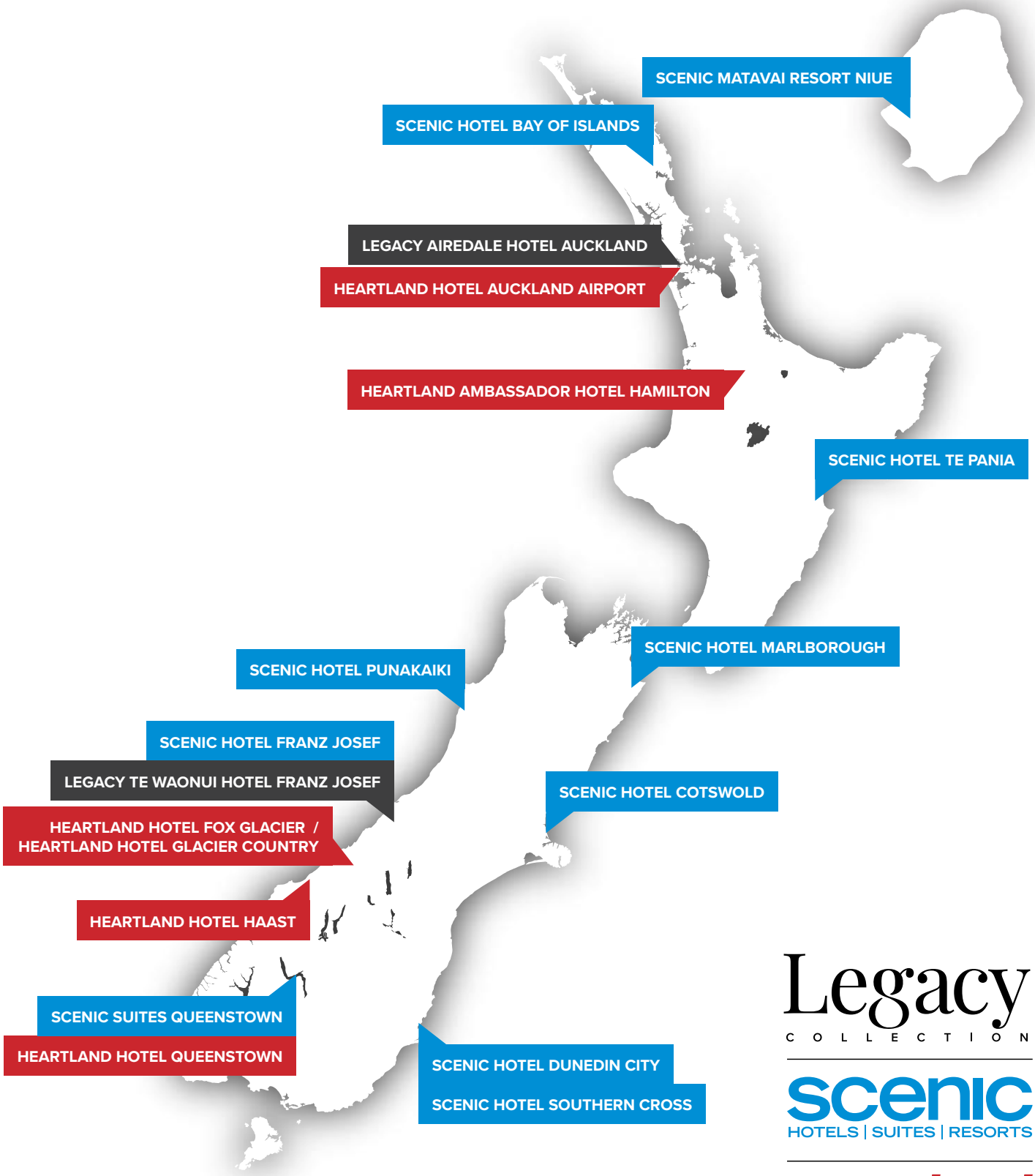
ACTIVITY DETAILS

Heartland Ambassador Hotel Hamilton has partnered with some great local operators to take your next conference or event to the next level.

From team building to easy activities or grand adventures, there are options for all. For more details or ideas contact our conference team.

Here is a taste of what there is to do in Hamilton and the Waikato:

- Learn about the different types of gardens and design, rather than the different species of plants at the stunning Hamilton Gardens
- See the magical wonder of the Waitomo Glowworm Caves – a subterranean maze of limestone caves and nature's formations
- Get your hobbit on in Hobbiton! Take a day trip to the famous movie set in Matamata, just a 1 hour drive from Hamilton
- Go sky high in a Hot Air Balloon, taking in views over the city and beyond
- Roll up to the Waikato River cycleways and other incredible trails throughout the region. There is an option from novice to advanced adventure cyclists
- If you are a frozen dessert connoisseur you can't go past the original store for a scoop of some of the best ice cream in the world at Duck Island Ice Cream
- Delve deeper into the history of the region at Waikato Museum
- Visit the Blue Springs, some of the most pure and clean water in the world – so much so that it is used for a large portion of the country's bottled water!
- If you are visiting in the summer months, stop in at Lavender Backyard Garden for a sensory overload!
- Discover the largest zoological park in the North Island, take a visit to Hamilton Zoo
- Golfers rejoice at St Andrews of Hamilton Golf Club – set alongside the Waikato River, the picturesque location and friendly staff will make for a great day out



Legacy
COLLECTION

scenic
HOTELS | SUITES | RESORTS

Heartland
HOTELS

0800 69 69 63
scenichotelgroup.co.nz



WINNER OF THE
2024 ENVIRONMENTAL
PROGRAM AWARD

SCENIC
HOTEL
GROUP
NEW ZEALAND
OWNED &
OPERATED